

# TWIG & THISTLE

TWIGANDTHISTLE.COM

## PAPER BASKET HOW-TO

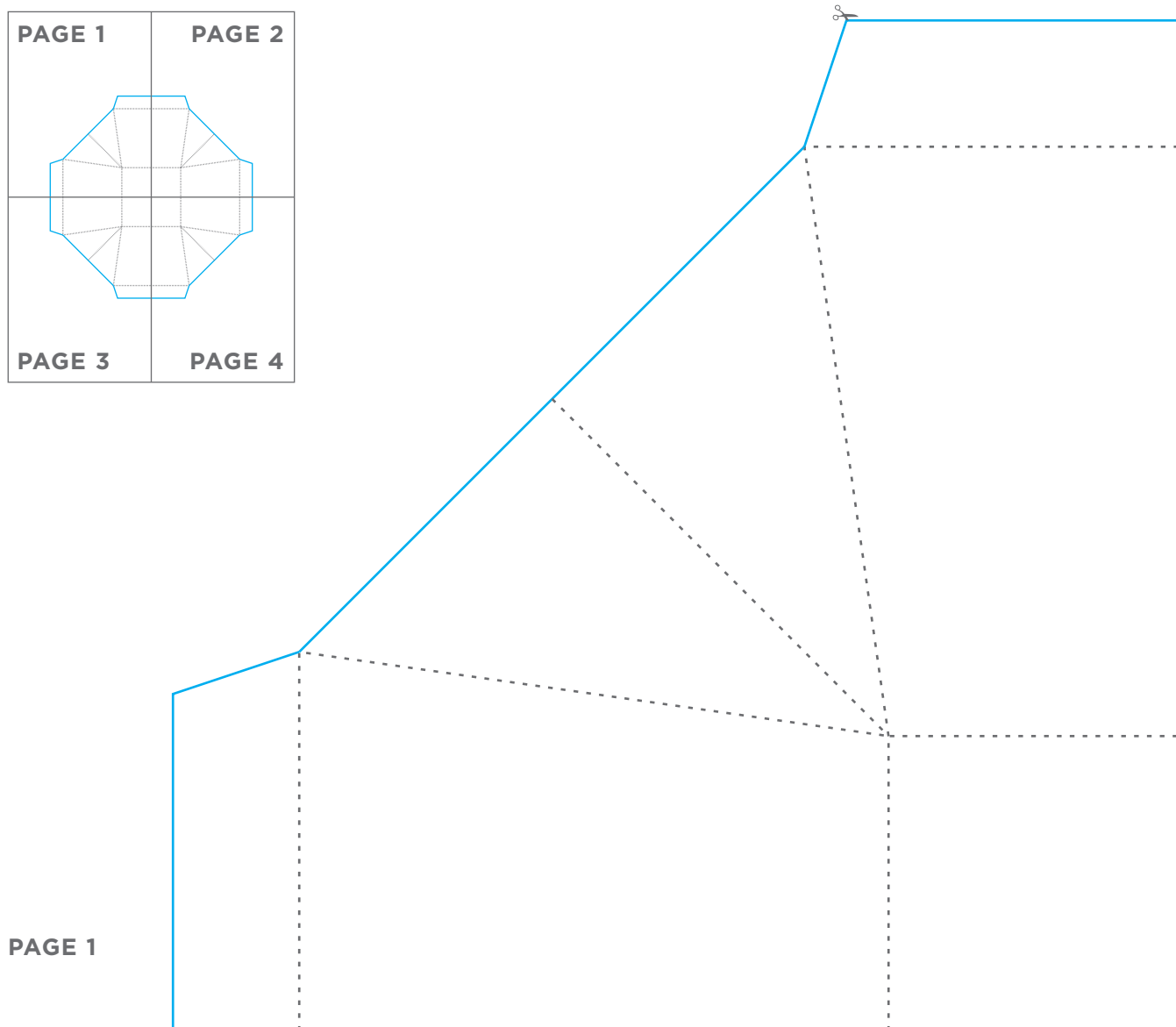
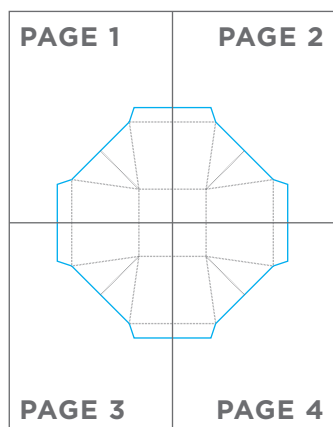
**STEP 1:** Print all four pages of template onto 8.5x11" paper. With an x-acto knife and ruler, cut along **PINK** lines on pages 2, 3 and 4 where indicated. Adhere double-sided tape to pages 1, 2 and 3 where indicated. Tape pages 1 and 2 together then 3 and 4 together. Next, tape the lower half of the template (pages 3 and 4) to the top half (pages 1 and 2) so that you have one large template like the diagram below. Now you have the template to make your basket!

**STEP 2:** Adhere your template to a large sheet of art paper (at least 12.5"x12.5") with low tack tape. If you need to, cut down the template so that it fits onto your paper. A thick watercolor paper or any color of craft paper would be a good choice. Using the template as a guide, score along dotted lines with a bone folder and a ruler. With an x-acto knife and a ruler, cut along solid **BLUE** lines. You now have the basket shape ready to fold!

**STEP 3:** Fold along each of the scored lines to create basket shape. Corner pieces fold inward while the top flaps fold down on the outside.

**STEP 4:** Cut four pieces of ribbon to 10". Tuck ribbon under first flap and secure with a piece of double-sided tape adhered to the inside of the flap. Repeat process for all sides and tie ribbon into knots at each of the corners. Once all four sides are tied and taped shut you've got your homemade basket ready to fill with sweet treats!

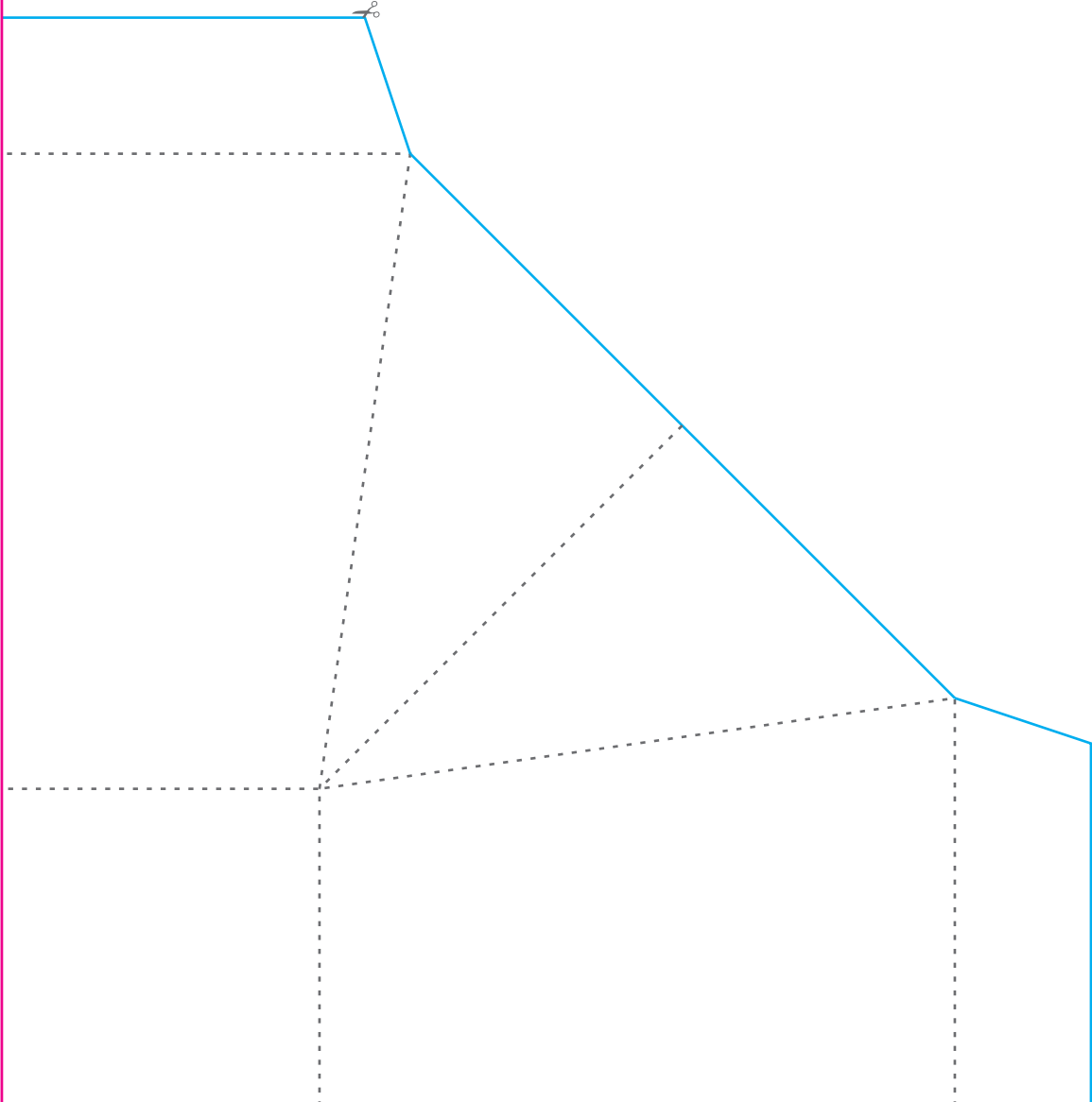
© 2009 TWIGANDTHISTLE.COM | FOR PERSONAL USE ONLY, NOT FOR COMMERCIAL USE



PLACE DOUBLE-SIDED TAPE ALONG THIS ENTIRE EDGE

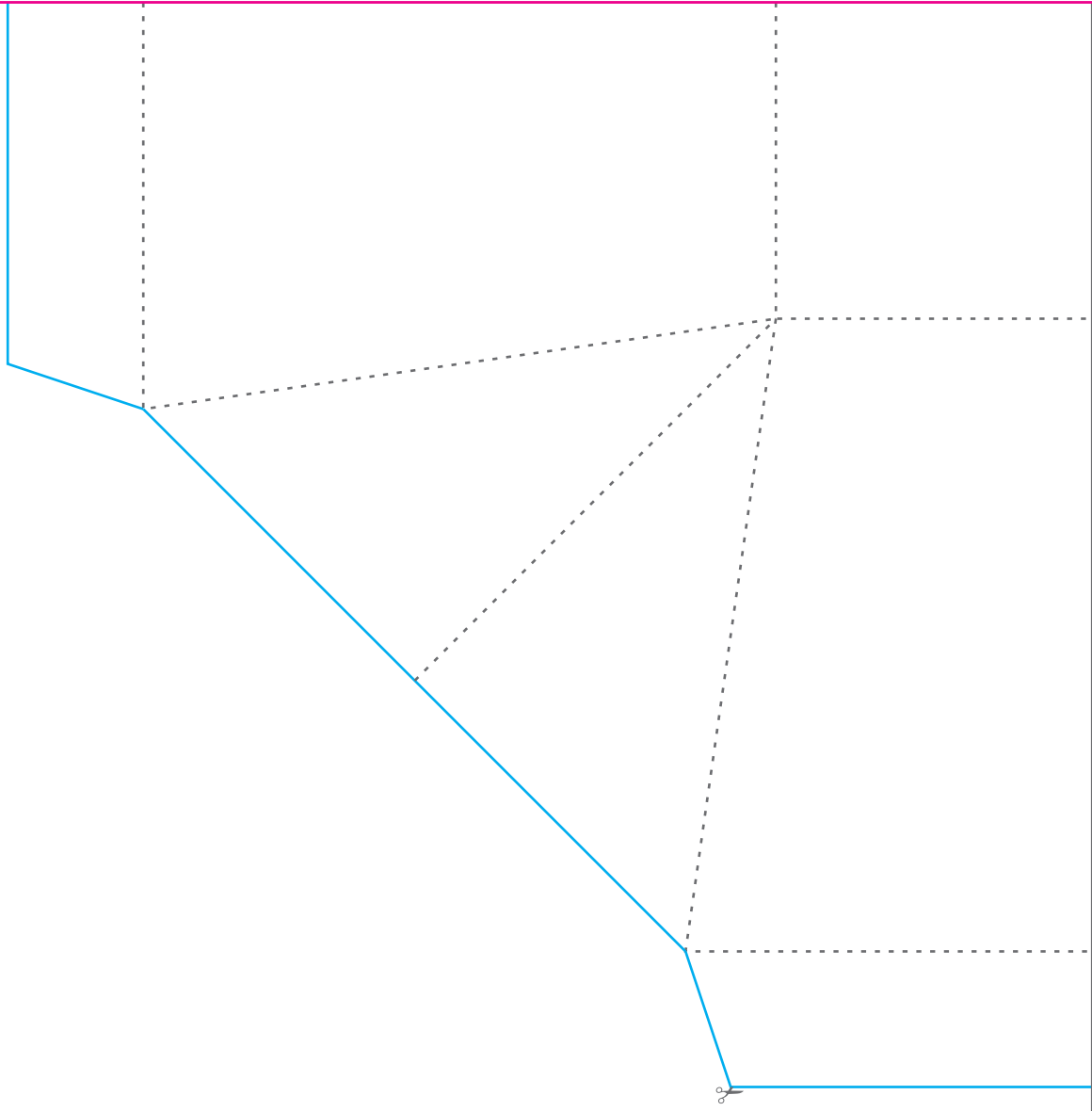
PLACE DOUBLE-SIDED TAPE ALONG THIS ENTIRE EDGE

CUT ALONG SOLID PINK LINE

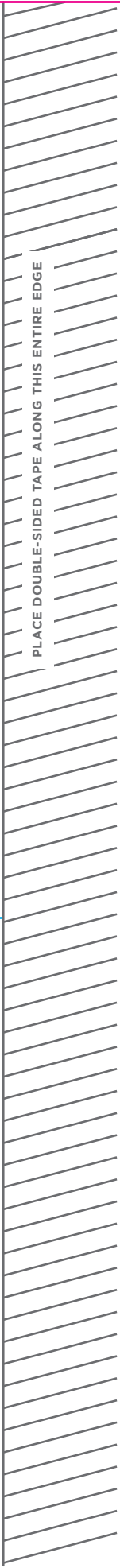


PLACE DOUBLE-SIDED TAPE ALONG THIS ENTIRE EDGE

CUT ALONG SOLID PINK LINE



PLACE DOUBLE-SIDED TAPE ALONG THIS ENTIRE EDGE



CUT ALONG SOLID PINK LINE

CUT ALONG SOLID PINK LINE

